

THE DEAN'S NEWSLETTER

WSCUC REACCREDITATION

The GTU has received the report from the team of accreditation visitors from the WASC Senior College and University Commission (WSCUC) who were on campus for four days in October. As is customary, their findings included both commendations about what we are doing well and recommendations for improvement.

Commendations:

1. GTU stakeholders have clarity of and are committed to the institution's mission and its expansion through the new strategic framework.
2. The team observed great appreciation for and strong confidence in the president, dean, and executive leadership team.
3. The new doctoral curriculum demonstrates a strong and positive effort by the faculty to more clearly integrate the institution's interreligious mission into its educational program structure. Furthermore, the streamlined academic department structure more clearly and coherently expresses the GTU faculty's commitment to interdisciplinary graduate theological research and student learning.
4. GTU's effort to create a prototype of interreligious cooperation and learning has the potential to be an innovative, creative model that, if successful, could be replicated throughout theological education.
5. GTU's leadership team has been transparent and straightforward in communicating to WSCUC areas within the institution that need attention, namely, finances, governance, institutional research, information technology infrastructure, and administrative and faculty diversity.
6. The team was encouraged by GTU's movement from input analysis to outcome analysis in the assessment of student learning, and it commends GTU for using multiple modes of data collection and multiple constituencies in its assessments. A good example of this transition is how the doctoral program, based on the area review, was realigned towards more interdisciplinary studies.
7. The GTU Board of Trustees and administration have created a thoughtful multi-year financial plan to generate new operating funds and endowment by bringing in new academic programs and philanthropic partners.
8. The GTU Board of Trustees and administration have worked effectively to protect and preserve the institution's financial resources in the midst of financial challenges and to eliminate its institutional debt.

Recommendations:

1. Further develop and institutionalize a framework and capacity for assessment, consistent with current expectations and best practices, that guides the collection, analysis, interpretation, and use of student learning data necessary for program improvement, quality assurance, and evidence-based decision making.
2. Strengthen program reviews to (a) align courses to program learning outcomes, (b) establish standards of performance for student achievement, and (c) include a comprehensive analysis of student learning that results from annual assessments of student learning outcomes. These steps are especially important for GTU since there is great variability in the courses that can be taken to fulfill degree requirements.
3. While acknowledging the effective working relationships of GTU's current trustees and member school presidents, and in keeping with the institution's expectations regarding the addition of new partners, develop a structural solution to the institution's bimodal governance challenge on a schedule that is compatible with the institution's new strategic framework.
4. Create an operational plan that connects anticipated resource gains associated with the new strategic framework with the affordability of the doctoral programs for new and continuing students.
5. Develop an information technology infrastructure that supports academic offerings, advising, research, scholarship, and assessment, and that prioritizes student services consistent with the institution's educational objectives and student learning outcomes.
6. Develop a strategy to diversify the executive leadership team and faculty commensurate with the institution's development of a diverse student body, faith traditions, and commitment to interreligious and multicultural education.

We will not know WSCUC's final decision about reaccreditation until late March. Meanwhile, the visiting team report gives us encouragement about the progress we have made and some clear direction for our continued efforts. Thanks to all the students, faculty, staff, and trustees who met with the visiting team and helped them understand the GTU!



INSIDE THIS ISSUE

CLGS EVENT, SFTS EVENT, DOCTORAL STUDENT ELECTIONS, HOMEBREWED CHRISTIANITY EVENT.....	2
CARE NEWS AND EVENTS, LIBRARY NEWS.....	3
PROFESSIONAL DEVELOPMENT EVENTS, LIBRARY EVENT, CJS EVENTS.....	4
WSR/CJS EVENT, CIS NEWS AND EVENTS.....	5
BADE MUSEUM EVENT, NEWHALL AWARD RECIPIENTS, STUDENT TRAVEL GRANT, FINANCIAL AID DEADLINE.....	6
2016 SARLO EXCELLENCE IN TEACHING AWARD, FOREIGN LANGUAGE EXAM DATES, JUDITH BERLING SYMPOSIUM.....	7
HONORABLE MENTIONS.....	8

DOCTORAL STUDENT ELECTIONS

A call for nominations for student elections will be coming to you via email very soon. Think about who would make excellent members of the Student Advisory Committee, Doctoral Council, and other excellent opportunities to participate and be of service. Nominate and vote when the opportunity comes. Nominations will be due to dchretain@gtu.edu by February 26, and elections will be held March 7-18.

CLGS EVENT: "HOMOSEXUALITY IS A THREAT TO OUR FAMILY AND NATION" KOREAN PROTESTANT RIGHT'S ANTI-LGBT MOVEMENT

A Lecture by Dr. Nami Kim

February 18, 2015, 6:00pm - 7:30 pm

Pacific School of Religion, Bade Museum

This talk will discuss the ways in which the Protestant Right has led the anti-LGBT movement in South Korea. It will specifically examine three loci of the Protestant Right's anti-gay bashing: mass media, the grade school, and the military and expose the complex but often hidden interplay between homophobia, heterosexism, anticommunism, and ethnocentric nationalism of conservative Korean Protestant Christianity.

Nami Kim is Associate Professor of Religious Studies at Spelman College in Atlanta, GA.

Co-sponsored by the GTU Korean Student Associations and Pacific School of Religion's API Program Initiative.



SAVE THE DATE: COFFEE WITH PRESIDENT POTTERVELD, MARCH 9, 9-10:30AM. STOP IN AND HAVE A CONVERSATION OVER COFFEE AND PASTRIES.

HOMEBREWED CHRISTIANITY

On **February 4 at 8 pm in Denniston Refectory**, the Graduate Theological Union will host Tripp Fuller and his Homebrewed Christianity podcast. (<http://homebrewedchristianity.com/category/podcast/>)

Fuller, who is pursuing a PhD in theology at Claremont Graduate University, says that his popular podcast brings listeners "the best nerdy audiological ingredients so you can brew your own faith."

The event will include an interview with Fuller by Tripp Hudgins of American Baptist Seminary of the West. A panel discussion on theological education will feature presidents or deans from the sponsoring seminaries. Paul Martin, Mark Richardson, and Arthur Holder will represent ABSW, CDSP, and the GTU, respectively. Additional panel members will be added upon confirmation. There will also be a theological quiz show!

Space is limited; reserve your free tickets online now at <https://ssl.charityweb.net/cdsp/event/homebrewed.html>

SFTS EVENT: "AIN'T I A WOMAN?"

February 18th, 7:00pm-8:30pm

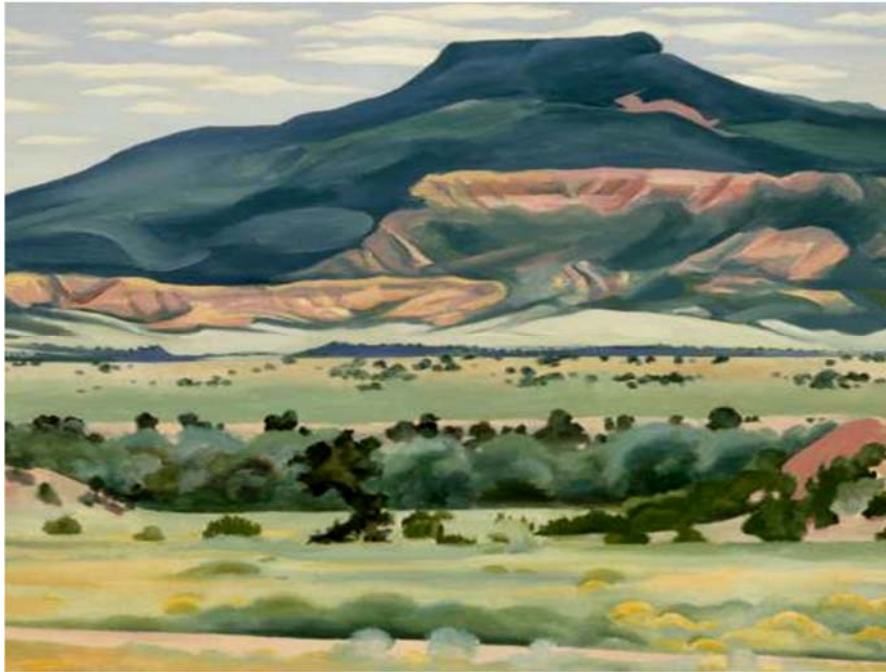
Montgomery Chapel, 5 Richmond Road, San Anselmo, CA

"Ain't I a Woman" is a musical theatre event celebrating the lives and times of four significant African American women: ex-slave and fiery abolitionist Sojourner Truth, renowned novelist and anthropologist Zora Neale Hurston, exuberant folk artist Clementine Hunter, and fervent civil rights worker Fannie Lou Hamer. Text is by Kim Hines. This one-woman show blends the art of storytelling with a rich musical score drawn from the heartfelt spirituals of the Deep South, the urban exuberance of the Jazz Age, and concert music by African American composers including Diane Monroe.

Since 1993, the Core Ensemble has toured in every region of the United States and internationally to Australia, England, Russia, Ukraine, and the British Virgin Islands. The Core Ensemble has received support from the National Endowment for the Arts and the Aaron Copland Fund for Music, among many others.

Seating is limited to 100 people, and this event is sure to sell out. Tickets are \$20, and can be purchased at Eventbrite.com





Georgia O'Keeffe, *My front Yard, Summer*, 1941, Georgia O'Keeffe Museum Collection

CARE NEWS AND EVENTS

Friday, February 5, 12-1pm

Brown Bag Lunch Series

Informal presentations by GTU students, faculty, and staff hosted the first Friday of each month from 12-1pm - bring your sack lunch!

Aspects of Awe, Wonder, and Spirituality in the Landscape Paintings of Georgia O'Keeffe

Presenter: Yohana Junker, GTU Doctoral Student, Art & Religion, and CARE Fall 2015 Grant Awardee

February 9 - May 27, 2016

Crossings/Mojándose: Works by Sandra C. Fernández

Regular Gallery Hours: T, Th, F 10am-3pm

Sandra C. Fernández's exhibition showcases her new series, "Borders." These embellished prints contemplate both the concept of borders as well as their reality, by focusing on the objects left behind by those crossing the Rio Grande.

While the beauty of Fernández's art naturally appeals to people of many cultures and faith traditions, it is clear that she approaches her work from a Latina, Catholic perspective. Through her work, Fernández opens the door for engagement related to immigration and other social justice issues.

Thursday, February 11, 5pm

Opening Reception & Gallery Tour with Sandra C. Fernández

Crossings/Mojándose: Works by Sandra C. Fernández

Tuesday, February 16, 1:30-3pm

Sacred Dance: Hula & Okinawan

Performance & Discussion with Michael Pili Pang & Yukie Shiroma

from "Halau Hula Ka No'Eau", kumu hula Michael Pili Pang, choreography by Michael Pili Pang.

*All events are held in CARE's Doug Adams Gallery.

LIBRARY NEWS

Introducing LibGuides. Online guides and tutorials are available linked from the library homepage (<http://gtu.edu/library>). If you are new to the GTU, or haven't used the library in a while, check out our Getting Started guide (<http://libguides.gtu.edu/start>). Are you writing a paper on Biblical Exegesis? We have a guide for that too: (<http://libguides.gtu.edu/exegesis>).

In the next few months, look for more guides to be added as we move our outdated paper tutorials to this new format. You'll see that the new guides have links to the catalog (so you can see if the item is available on the shelf) and short video tutorials to help you search and access our materials remotely. Of course, librarians are available for assistance during the day - but if you are stuck at 3am, we hope our guides will be able to help! Questions? Ask a librarian at library@gtu.edu, 510-649-2501, or in person at the reference desk.





PROFESSIONAL DEVELOPMENT EVENTS

Orientation to Doctoral Council and the Dissertation Proposal (February 3rd, 10:00am, Dinner Board Room)

If you are planning to propose your dissertation in the Spring you are highly encouraged to attend this workshop.

Facilitators: Dr. Arthur Holder and Dr. Kathleen Kook

Writing Conference Proposals and Abstracts (February 10th, 10:00am, GTU Student Lounge)

The deadlines for the SBL and AAR national conferences are in early March. This workshop will provide helpful tips on how to write strong conference abstracts. Bring a copy of your AAR/SBL conference proposal to revise.

Facilitator: Dr. Rita Sherma

CV and Cover Letter Workshop (February 25th, 10:00am, Student Lounge)

An interactive workshop that provides tools and strategies to strengthen your CV and cover letter. Bring a copy of your CV and cover letter to revise

Facilitator: Dr. JanJan Lin.

Writing Workshop (March 9th, 10:00am, Student Lounge)

An interactive workshop that provides tools and strategies for excellent academic writing at the graduate level.

Facilitator: Dr. Som Pourfarzaneh



24TH ANNUAL READING OF THE SACRED TEXTS

Rita Sherma, Director of the Center for Dharma Studies and Associate Professor of Dharma Studies at the GTU, will present this year's Reading of the Sacred Texts, "The Technology of Transformation: Sacred Texts and the Divine Feminine." The theology of the Hindu Great Goddess (better understood as God the Mother) is crystalized in the 5th century sacred text known as the *Devi Māhātmya* (the Glorification of the Great Goddess). It is through this renowned text that the Feminine Deity is conceptualized as both transcendent and immanent. Despite the compelling clarity of the theological vision of the text, it has rarely received theological commentary. Why is the *Devi Māhātmya* rarely engaged as a theological text? Why are there so few commentaries on it?

Dr. Sherma's lecture is scheduled for **Thursday, February 25, at 7pm in the GTU Dinner Board Room**. A reception precedes the lecture at 6:30 pm. Sponsored by the GTU Flora Lamson Hewlett Library, the lecture is free and open to the public. For more information, call 510-649-2541.

To coincide with the Sacred Texts lecture on February 25, the library will feature an exhibit of Hindu antique and modern era pieces, wall hangings, books from the GTU library collection, and other Hindu objects from our archival collections.



CJS NEWS AND EVENTS

Tuesday, Feb. 9th, 2016: Rabbah bar Nachmani's Saga: A Talmudic Adventure

12:45pm: 2465 Le Conte Avenue | HEDCO Room | Berkeley, CA 94709

The roller coaster narrative of the sage Rabbah bar Nachmani (270-330 CE) opens up the lived political and cultural experience of rabbinic civilization. Bring your literary and legal lenses!

Monday, February 22nd: "New Directions in Sephardic Studies."

9:30am: Graduate Theological Union | Dinner Board Room, 2400 Ridge Road, Berkeley CA 94709

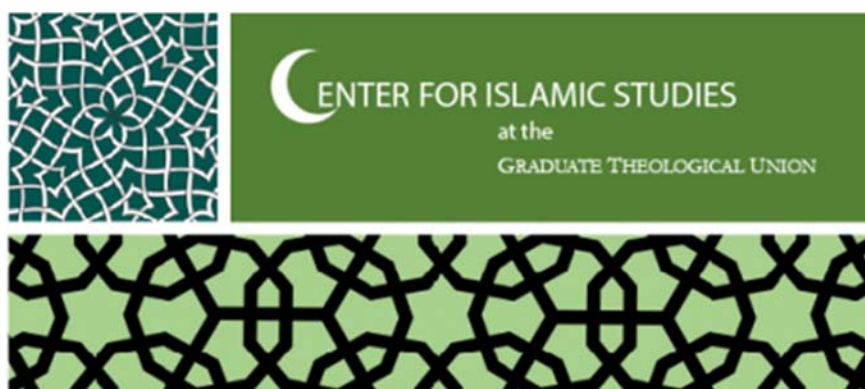
The past decade or so has seen both a "Jewish turn" in Middle Eastern Studies and a "Middle Eastern turn" in Jewish Studies. This conference will explore the intersection between these two "turns," exploring the new directions in Sephardic Studies, particularly as they shape scholarship in the Bay Area.

WOMEN OF THE BIBLE: AFTER ABEL AND OTHER STORIES

Thursday, February 18th, 2016

6:00pm Reception, 6:30pm Lecture
2121 Allston Way, Berkeley, CA

Author Michal Lemberger will read from and discuss her new book, *After Abel and Other Stories*. Vividly reimagined with startling contemporary clarity, this debut collection of short stories gives voice to silent, often-marginalized biblical women: their ambitions, their love for their children, their values, their tremendous struggles, and their challenges. Lemberger's stories honor the integrity of the primary texts while simultaneously opening spaces within narratives whose meanings have come to seem set in stone in order to reveal the complex worlds portrayed by the Hebrew Bible. This event is co-sponsored by GTU's Women's Studies in Religion Program.



CIS NEWS AND EVENTS

Congratulations to Sammy Rahmatti, CIS outreach coordinator and MA alum, for his excellence in certifying as a Spiritual Care Volunteer at Stanford Hospital. Congratulations also to Taqwa Surapati, CIS MA student, for her exemplary leadership as a chaplain at Stanford Hospital.

CIS is pleased to cosponsor events in honor and celebration of **Black History Month** and throughout the year. Please see our website for events: <http://gtu.edu/centersandaffiliates/islamicstudies/events>

January 16-March 20: Art Exhibit at San Francisco Public Library
Islamic Art Exhibit presents *Arabic: Language of the Quran*
In partnership with CIS and several co-sponsors.

February 5-6th : Conference at UC Berkeley, Boalt School of Law
Institutionalizing Islamophobia: Critiquing the CVE Framework and Emerging Programs
IRDP conference cosponsored by CIS

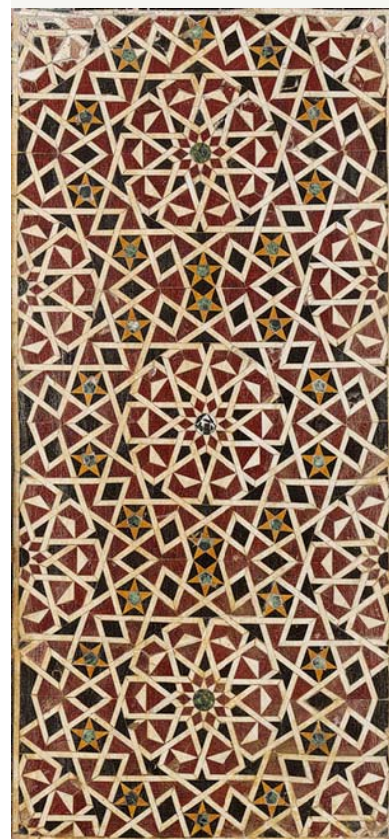
February 4th: Performance by Hassan El Jai
A dramatic reading of *The Forty Rules of Love* (recently performed at Fort Mason in SF)
Zaytuna College Main Hall, cosponsored by CIS, evening performance, time TBA.

February 26-May 8: Exhibit at Asian Art Museum San Francisco
Pearls on a String: Artists, Patrons and Poets at the Great Islamic Courts
Carol Bier, Islamic art historian and CIS visiting scholar, will be leading related events, dates TBA.



DEADLINE FOR PROSPECTIVE SP16 GRADUATES:

The deadline to file completed and approved copies of Theses/ Dissertations or Certification of Oral Examination (for MA candidates in the Biblical Languages area of concentration) forms for spring graduation is April 1.



LIBRARY
ART EXHIBITIONS

Be sure to check out the current library art exhibition, Love, Art and Devotion: Sacred Objects, Sacred Moments and Ars Mystica, before it closes in mid-February. A similar exhibit is on display at the Dominican School of Philosophy and Theology (DSPT); that exhibit will run through the summer.



FINANCIAL AID
DEADLINE:
FEBRUARY 15TH



BEYOND DESTRUCTION: ARCHAEOLOGY & CULTURAL HERITAGE IN THE MIDDLE EAST

Friday, March 11th, 6:00pm: Dr. Patty Gerstenblith of DePaul University will give the keynote address for UC Berkeley’s Center for Middle Eastern Studies’ symposium, “Beyond Destruction: Archaeology & Cultural Heritage in the Middle East,” co-sponsored by the Bade Museum at Pacific School of Religion. Keynote talk and reception that follows held at in the Bade Museum room in the Holbrook Building, Pacific School of Religion, 1798 Scenic Ave, Berkeley.

BEYOND DESTRUCTION
ARCHAEOLOGY & CULTURAL HERITAGE IN THE MIDDLE EAST

The destruction of antiquities at the hands of the self-proclaimed Islamic State has highlighted the urgent, long-standing need for a global discussion of cultural heritage protection in the Middle East. In Spring 2016, we are starting that conversation.

BERKELEY, CALIFORNIA
STREAMING ONLINE
FREE & OPEN TO THE PUBLIC

This symposium aims to move public discourse around cultural heritage beyond reactions to looting and destruction and to engage more deeply with responses from academic and governmental institutions.

FRIDAY, MARCH 11
6:00 PM // KEYNOTE
Dr. Patty Gerstenblith
DePaul University
RECEPTION & TOURS TO FOLLOW
BADE MUSEUM OF BIBLICAL ARCHAEOLOGY

SATURDAY, MARCH 12
9:00 AM // POLITICS
12:30 PM // LUNCHTIME KEYNOTE
Dr. Monica Hesse
American University Center
2:00 PM // PRACTICE

The program will also focus on emerging currents within the discipline of Middle Eastern archaeology that emphasize a well-rounded approach to cultural heritage and require practitioners, government officials, artists, and the public to engage both with archaeological remains and the living communities in which research is conducted.

center for middle eastern studies
UC BERKELEY

learn more at CMES.BERKELEY.EDU/CULTURAL-HERITAGE

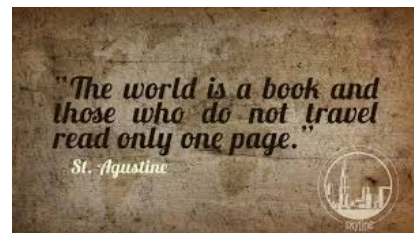
2016-2017 NEWHALL AWARD RECIPIENTS

In 1987, the late trustee Jane Newhall gave a generous gift to endow competitive awards for doctoral students to engage in collaborative teaching or research with faculty mentors in the belief that such collaborative work would contribute to the professional development of the students. The 2016-17 Newhall Recipients paired with their Faculty mentors are: Levi Checketts with Lisa Fullam, Diandra Chretien with Arthur Holder, Philip Erwin with Annette Weissenrieder and Jean-François Racine, Evan Hershman with Jean-François Racine, Leigh Ann Hildebrand with Naomi Seidman, Daekyung Jung with Ted Peters, Yohana Junker with Devin Zuber, Henry Kuo with Inese Radzins, Su-Chi Lin with Eduardo Fernández, Cesar Melgar with Barbara Green, Daniel Moceri with Arthur Holder, Hyun Ho Park with Jean-François Racine, Laura Jean Torgerson with Eduardo Fernández, Colette Walker with Devin Zuber, Todd Whelan with Naomi Seidman, Ada Renée Williams with Gabriella Lettini, and Ann Woods with Lisa Fullam.

GTU STUDENT TRAVEL GRANT CYCLE #2

APPLICATION DEADLINE IS TUESDAY, FEBRUARY 16, 2016 AT 5PM

The second cycle deadline to compete for a GTU Student Travel Grant is **Tuesday, February 16, 2016 at 5pm in the GTU Dean’s Office**. GTU doctoral students who are presenting papers at national conferences and meetings between February 1, 2016 and June 30, 2016 are eligible to apply for the second cycle. Additionally, the GTU Student Travel Grant Application form must accompany supporting materials. The application form is available on the GTU webpage. (Go to "Current Students" across the top banner and then scroll down to the "Professional Development" subheading and the link for the application will be listed there.) For more information, please consult the 2015 Doctoral Program Handbook (p. 91), call the GTU Dean’s Office (510.649.2440), or email, amunoz@gtu.edu.



2016 SARLO EXCELLENCE IN TEACHING AWARD

The Sarlo Excellence in Teaching Award is given each year to a member of the Core Doctoral Faculty whose teaching and mentoring of doctoral students embodies the values of interreligious dialogue and interdisciplinary approach to teaching. The next recipient of this honor, which entails a substantial monetary award, will be announced at the GTU Commencement on May 12, 2016.

Selection will be made by the Appointments and Review Committee of the Core Doctoral Faculty, with the addition of the GTU President as a voting member for this purpose. The Faculty Council has approved a nomination procedure in which a list of candidates will be composed from nominations submitted by doctoral and MA students through the Areas of Study in the doctoral program.

The Area Student Assistant in each area will be responsible for facilitating a process by which students in the area will select one Core Doctoral Faculty member to nominate for this award. Discussion may take place among doctoral students when they gather at the February and March area meetings, but opportunity should be provided for all students to participate in the selection through email. GTU MA students are invited to submit their suggestions for nominations to MA Program Coordinator Angela Muñoz who will forward them to the doctoral student area assistant in the relevant doctoral area of study.

The faculty person nominated may be from within the area, or from another area. The name of the one Core Doctoral Faculty member nominated by an area's students should be forwarded to the GTU Dean by the Area Student Assistant as soon as possible, but no later than Friday, March 18. The selection criteria are as follows:

- a. Eligible candidates are active members of the Core Doctoral Faculty.
- b. Candidates exhibit creative and effective pedagogical methods and performance, both in the classroom and in their advising and mentoring of doctoral students.
- c. Candidates exhibit ecumenical and/or interreligious sensitivity and commitment in their teaching, regardless of the subject matter or field.
- d. Candidates exhibit and promote effective use of interdisciplinary approaches, as appropriate to their fields.
- e. Candidates display sensitivity to ethnic and cultural diversity.
- f. Sarlo Award recipients may be selected only once.

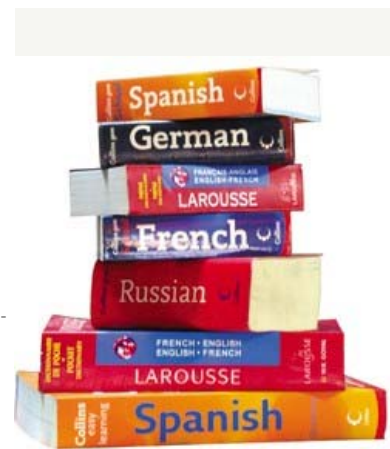
Previous recipients are Judith Berling (2003), Fumitaka Matsuoka (2004), Clare Fischer (2005), Doug Adams (2006), Gina Hens-Piazza (2007), Jerome Baggett (2008), Lewis Rambo (2009), Alejandro García Rivera (2010), Ronald Nakasone (2011), Boyung Lee (2012), Mia Mochizuki (2013), William O'Neill (2014) and Munir Jiwa (2015). This annual award is made possible by a generous gift from the Sarlo Foundation.

LEARNING AS COLLABORATIVE CONVERSATION: CELEBRATING THE SCHOLARSHIP AND TEACHING OF JUDITH BERLING

On May 25-26, 2016, the GTU will be holding a two-day symposium celebrating the scholarship of Dr. Judith Berling and her 28 years of service as a faculty member and administrator with the GTU consortium.

Dr. Berling's dedication and holistic participation in boundary-crossing embody the best of the GTU's approach to education. Her effective and inclusive methods in interdisciplinary, interreligious, and intercultural learning, teaching, and communication have been instrumental in fostering GTU's culture of inclusiveness and appreciation for diversity. The GTU invites you to join Dr. Berling's students, colleagues, and friends from near and far as we gather to share how Dr. Berling has influenced us all in our personal, educational, and professional development. The Wednesday afternoon session of the symposium will feature the GTU's 2016 Surjit Singh Lecture by Philip Wickeri.

For the full-two day schedule see the following link: <http://gtu.edu/events/celebrating-judith-berling>



MODERN LANGUAGE EXAM

The next Modern Foreign Language Examination is Wednesday, February 24, from 1PM to 4:45PM in the Dinner Board Room. Register by February 10 via this link: <http://goo.gl/forms/cNYSpL5LnW>, or by contacting Wendy Arce, Student Affairs Office Manager, warce@gtu.edu, 649-2400.



THE DEAN'S NEWSLETTER

The Dean's Newsletter is for official notices from the GTU Dean's Office regarding academic affairs and for announcements of educational events (lectures, conferences) focusing on academic research and thus of particular interest to faculty and MA and PhD students.

Send submissions to
Angela Muñoz,
amunoz@gtu.edu.

GRADUATE THEOLOGICAL UNION
Office of the Dean
2400 Ridge Road
Berkeley, CA
94709
<http://www.gtu.edu>

Phone: 510-649-2440
Fax: 510-649-1417
E-mail: amunoz@gtu.edu



HONORABLE MENTION

MA STUDENTS

Noah Lyons, PSR*

Pitt Visessuk, IBS

* approved with honors

Comprehensive Proposal Approved

Effendi Sunur, THEO

Kamal Abu-Shamsieh, IDS

Deborah Addington, IDS

Oral Comprehensive Exams Passed

Su-Chi Lin, ART

Ki Wook Min, THEO

Suzanne Miller, BIBL

Cesar Melgar, BIBL

Henry Kuo, THEO

Eleanor Shapiro, IDS

Advanced to Candidacy

Yong Yeon Hwang, IDS

Mohammad W. Sajjad, CHSR

Justin Tanis, IDS

Dissertation Successfully Defended

Oliver Putz, THEO

Laurie Garrett-Cobbina, IDS

Kathryn Moles, ETHC

Richetta Amen, BIBL